

THE PRESERVE AT CANYON RIDGE



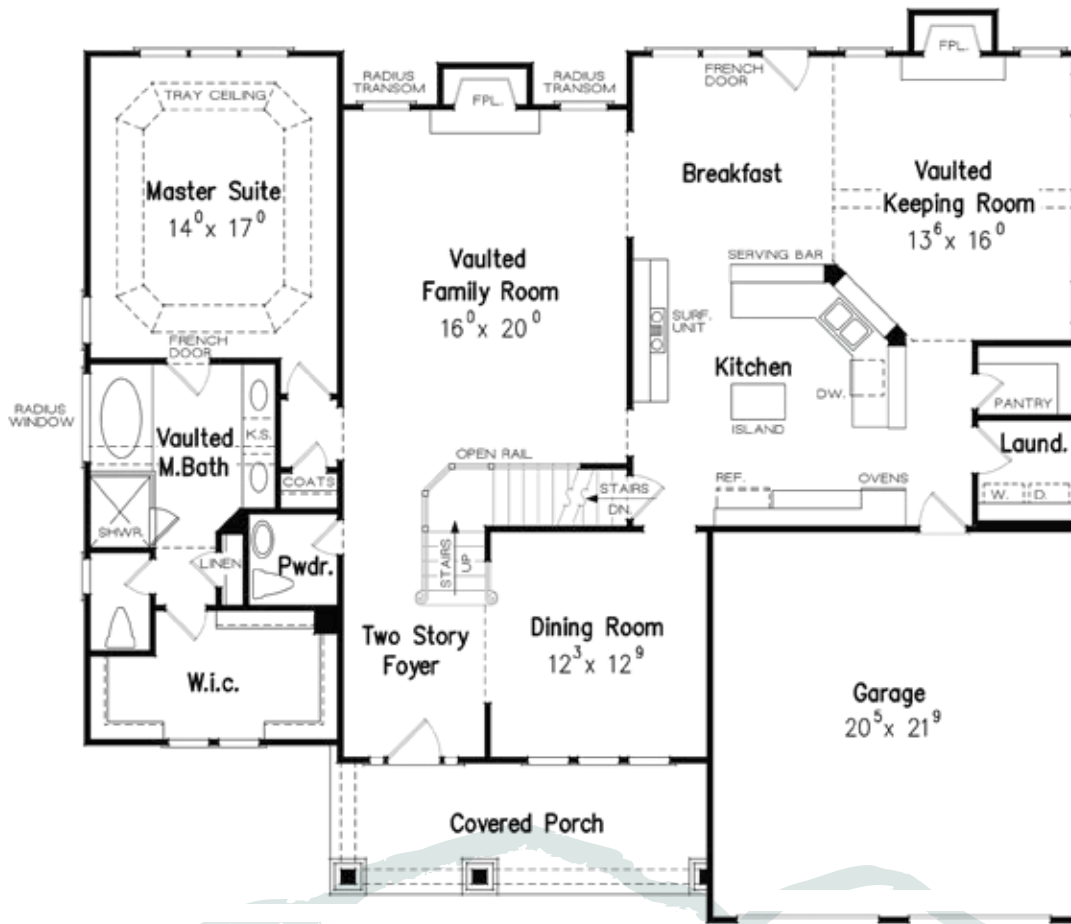
VIRGINIA

PLAN DETAILS-2992 SQ FT

- 4 Bedroom
- Master Suite on Main Includes Daylight Walk-In Closet
- Large Master Bedroom
- 3.5 Bath
- Laundry Room Off Kitchen
- Hardwoods Throughout Main Living Area
- Fireplace in Family Room
- Keeping Room With Vaulted Ceiling & Optional 2nd Fireplace
- Bonus Room Upstairs-Optional
- Lots of Kitchen Cabinets and Counter
- Gracious Dining Room
- Elegant 2-Story Foyer and Family Room”
- Open Floor Plan
- Optional Covered Back Porch
- Covered Front Porch
- 2 Car Garage

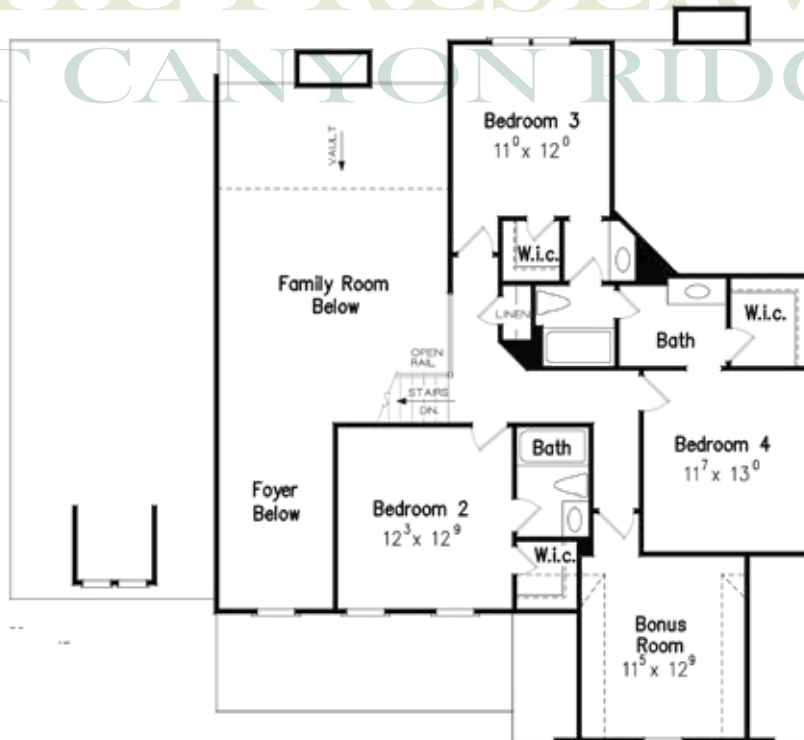
All drawings and measurements are for marketing purposes and are approximate.

ThePreserveAtCanyonRidge.com
770-776-8665



MAIN FLOOR

THE PRESERVE AT CANYON RIDGE



SECOND FLOOR