

# THE PRESERVE AT CANYON RIDGE



**All drawings and measurements are for marketing purposes only and are approximate.**

**Due to COVID 19: Because of supply chain delays or lack of material availability, materials and selections might be substituted with equal quality and pricing by the builder.**

## GABRIELLA- 2 STORY- 2957 SQ FT

- Two-Level Living
- 4 Bedrooms, 3 Full Baths
- Luxury Vinyl Plank Flooring Throughout Main Living Area
- Fireplace
- Gracious Columns Define Formal Dining Area
- Large Island with Double Sink & Dishwasher in Kitchen
- Kitchen contains a Shelf Pantry & Multiple Countertops
- Primary Bedroom Has His and Hers Walk-In Closets with Full Bath Attached

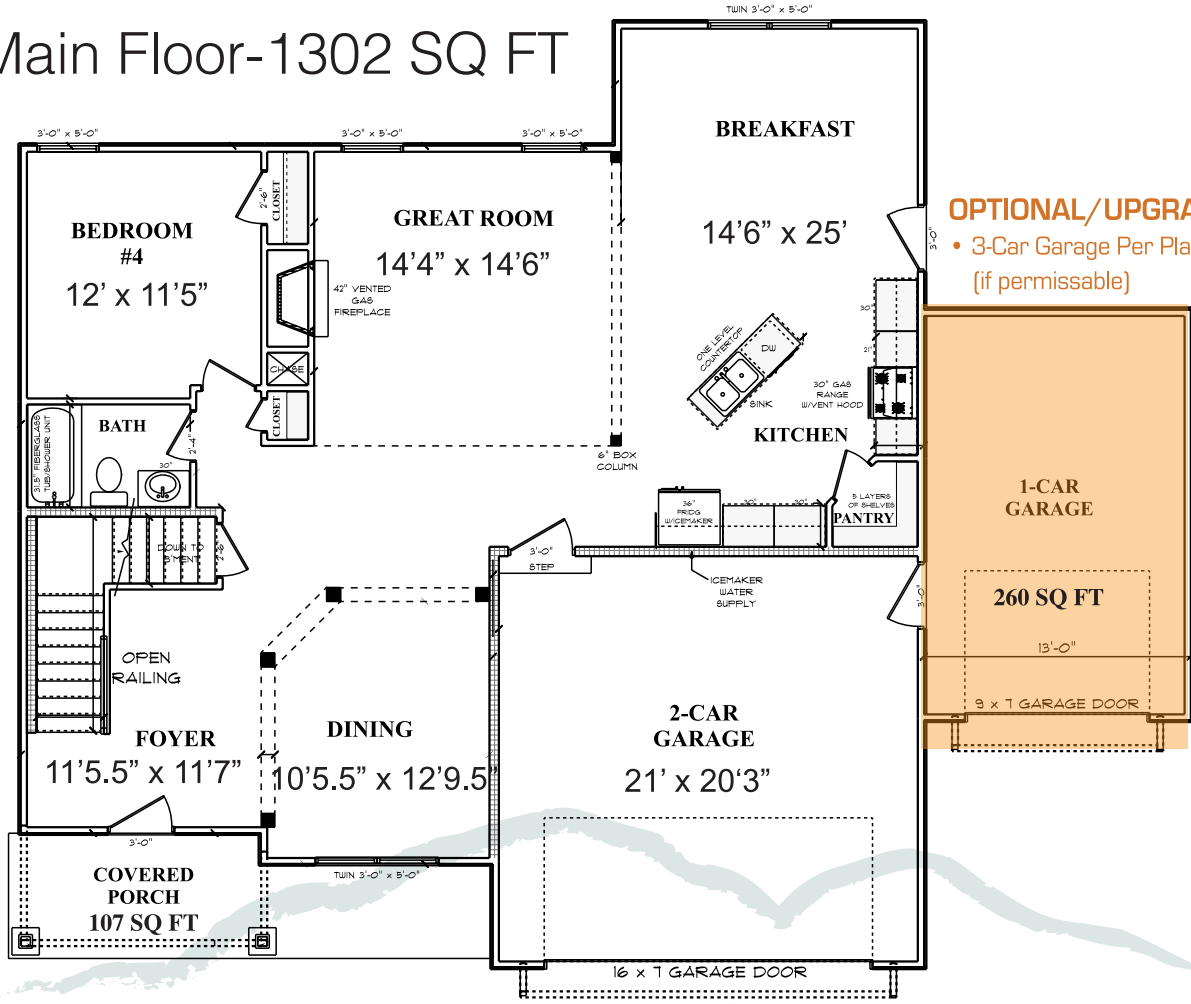
- Front Covered Porch Entry Way
- 2- Car Garage
- Unfinished Basement 1314
- Computer Area

### OPTIONAL/UPGRADES

- Add Shake-Style Siding
- Add Additional Stone to Front Elevation
- Add 3-Car Garage (depends on Lot size)
- Add Optional Bonus Room
- Add Optional 4th Bath to Second Floor

**ThePreserveAtCanyonRidge.com**  
**770-776-8665**

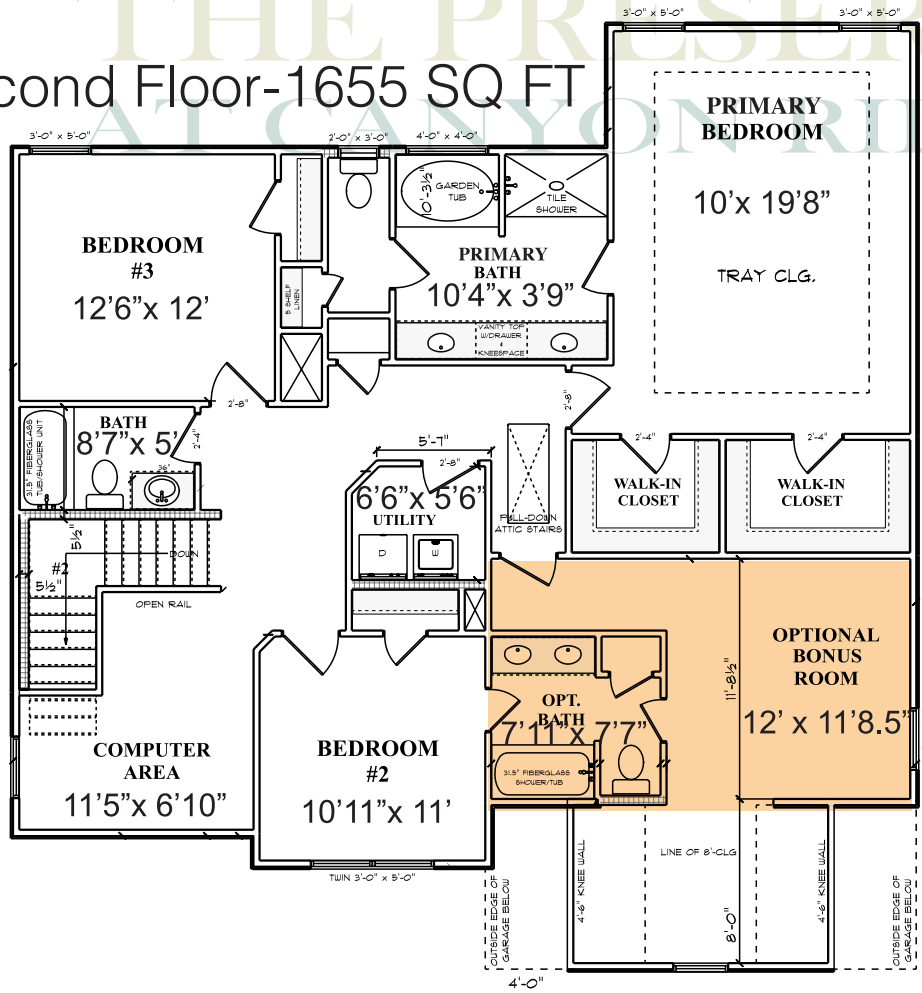
# Main Floor-1302 SQ FT



### OPTIONAL/UPGRADES

- 3-Car Garage Per Plan/Lot (if permissible)

# Second Floor-1655 SQ FT



All drawings and measurements are for marketing purposes only and are approximate.

Due to COVID 19: Because of supply chain delays or lack of material availability, materials and selections might be substituted with equal quality and pricing by the builder.

### OPTIONAL/UPGRADES

- Bonus Room
- 4th Bath